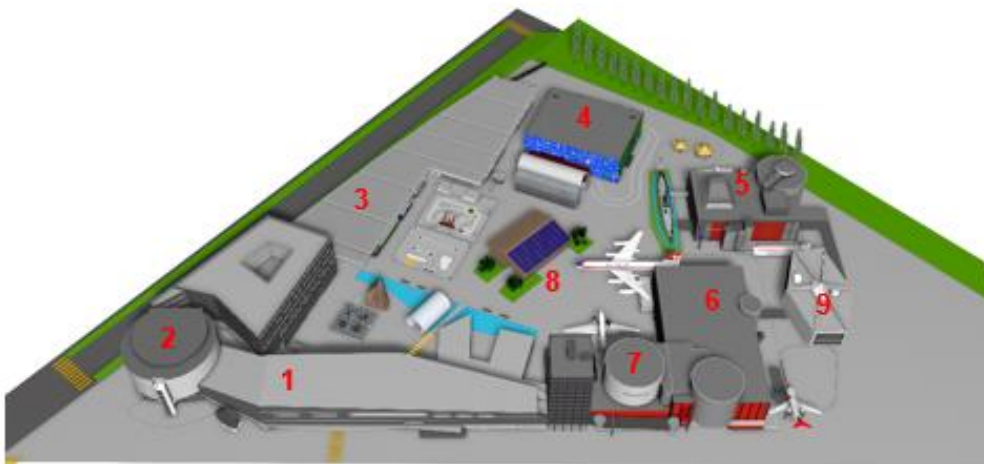


# "Everything that's fun" - Cycle I

## Attractions for students at the Swiss Museum of Transport



- 1 Media World (1st floor)**
- 2 Film theatres / Swiss Chocolate Adventure**
- 3 Rail hall**
- 4 Road traffic hall**
- 5 Navigation, Cableways and Tourism Hall**
- 6 Aerospace Hall**
- 7 Planetarium**
- 8 Arena**
- 9 Hans Erni Museum**

The range of activities for schools at the Swiss Museum of Transport is very diverse and educational. But learning objectives and the acquisition of knowledge do not always have to be in the foreground.

In this compilation you will find an overview of the exhibition areas, where the focus is primarily on fun and experience.

All attractions are included in the admission price, should this not be the case, it is noted.

The following pages list a selection of highlights for Cycle I, but of course there are many more "entertaining" areas depending on your interests!

## Rail hall

### Stoos funicular railway

The model of the Stoos funicular can be discovered through a climbing wall and a slide.



---

### Coal shovels

The job of the stoker can be tried out in the form of a game. Try to shovel 100kg of coal in two minutes.



---

### Train simulator "Giruno"

Drive with the train simulator through the Gotthard base tunnel from northern to southern Europe or vice versa. The simulator includes an original driver's cab.



---

### Trolley game

The Draisinien game is all about having fun. The children can compete against each other in a race.



---

### Combined transport

The "Combined Transport" theme island explains the transfer of goods from road to rail and vice versa. In a simulator, the children can try out the job of a crane operator for themselves.



## Road traffic hall

### Mirror world "SEE YOU"

Mirrors, lights and reflectors provide more clarity and safety in road traffic. But beware: they can also be distracting!



---

### Carousel Street Hall

Even the little ones have fun on the carousel in signal colours. The carousel can be put into operation at any time.



---

### Picking Head Logistics

The logistics game "Picking Hero" requires quick thinking and action. The right buttons have to be pressed and the matching goods scanned in the shortest possible time. Are you a Picking Hero?



---

### Galliker Model

The miniature model invites children to playfully recreate the supply chain with models.



---

### Experience hydrogen mobility

What is the difference between an old petrol pump (ca. 1940) and a modern hydrogen filling station? You can find out about this and much more on the subject of hydrogen mobility and security of supply in the Road Transport Hall, where you can also take a trip back in time.



### Feel the airstream; Fabian Cancellara

Get on your racing bike now and feel the real racing feeling.



---

### Play Island Car

On this play island, the very little ones can discover their joy for cars. Various cars as well as garages and other shelters are available as accessories.



---

### Navigation, Cableways and Tourism Hall

#### Ferry game

In this game, the children can load a ferry themselves.



---

#### Rowing game

In a competition, the children can compete against each other as well as against a steamboat.



---

#### Tourism pinball

An ingenious mechanical marble run shows the various tourist attractions in Switzerland.





### Ride around the DS Rigi

On the Schifflibach, children have the opportunity to walk around Switzerland's oldest steamboat and climb up a rope ladder.



---

### Livemap Switzerland (Swissarena)

Through the walkable aerial view, children can get to know Switzerland better and project current, real-life events onto the map with the help of our new app. App:

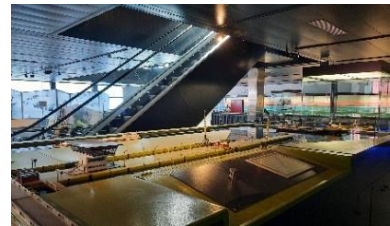
<https://www.verkehrshaus.ch/de/museum/swissarena>



---

### Lock model

Navigation is only possible where the waterway does not exceed a certain gradient. In this model, students can observe directly on site how locks transport ships when the gradient is too high.



---

### Nautirama

Embark on a 20-minute journey through the history of shipping and tourism in Central Switzerland. Walk through the salon of a paddle steamer, experience a medieval shipping accident and learn about the influence of industrialisation and the introduction of steam navigation on the Lucerne region.

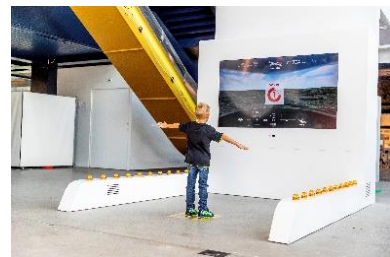


---

### Aerospace Hall

#### Swiss Simulator

In the Swiss simulator, the task is to land an aircraft safely at Zurich Airport. In the process, the children learn how sluggishly an aircraft can be steered.



### **Air traffic control**

The children experience how challenging it is to secure and monitor Swiss airspace. In a game, they have to guide an aircraft safely through the airspace with their own bodies and fly past various obstacles. This requires skill and concentration.



---

### **Airport control**

With the help of an X-ray machine, the children can check various suitcases for prohibited objects and playfully try to put the passengers' luggage on the right plane.



---

### **Swiss Cargo**

Children can discover the world of the airport and passenger transport in a playful way. The highlights are a walk-on conveyor belt and a slide that is the length of an original rescue slide.



---

### **Sim World**

In Sim World, the students can explore different flight simulators. From the first aircraft of the Wright Brothers to the modern fighter jet.



---

## **Hans Erni Museum**

### **Painting Island**

With paper and crayons in many different colours, the children create drawings as they please. Each child can take the small work of art home with them.

---

## Arena

### Traffic Garden

In the traffic garden, the traffic rules are explained to the children in a playful way. With the karts, they can put what they have learned into practice right away.

For reservations: <https://schulen.verkehrshaus.ch/>



---

### Play ship

The children can have fun on a real ship and slip into different roles.



---

### Kids Cargo

Various vehicles are available here for the youngest children. The worldwide transport methods can be "played" here as the children transport the containers with the trains, trucks, ships and planes.



---

### Garden railway (fee required)

The trip starts at the station of the Hans Erni Museum and passes various locations. In addition to the steam locomotive, there is also an SOB diesel locomotive.



---

### Sky-Jumper (chargeable)

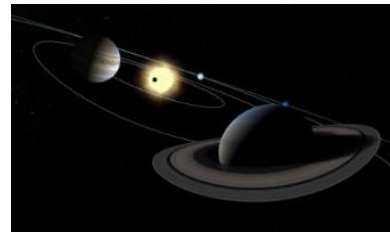
Children can experience a feeling of weightlessness on the large trampoline in the arena. The ten-minute jump into the sky costs 10 francs.



### **Planetarium (fee required)**

Offers a glimpse into the realm of the stars by means of modern technology. Daily shows for all ages:

<https://www.verkehrshaus.ch/besuchen/planetarium/spielzeiten.html>



---

### **Film theatre (fee required)**

Experience exciting and educational documentary films on the biggest screen in Switzerland.

The performances take place daily:

<https://www.verkehrshaus.ch/besuchen/filmtheater/spielzeiten.html>

